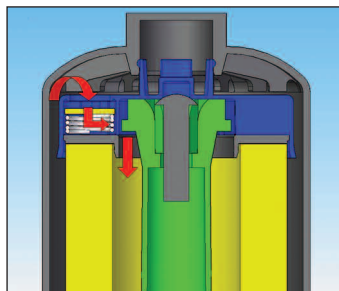
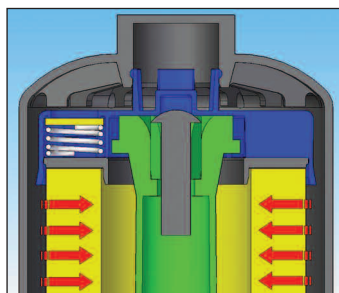
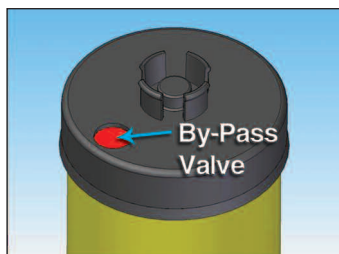


New Design of Lube Filter Elements

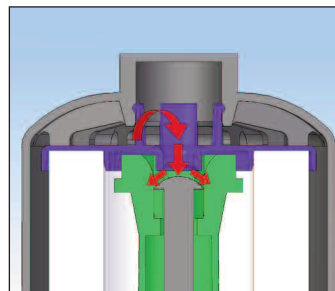
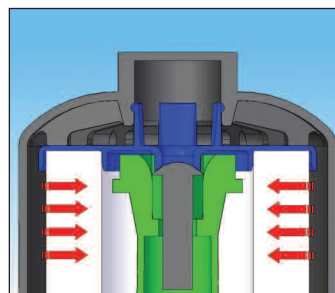
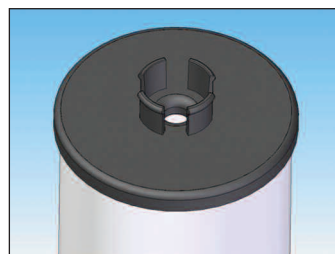
Baldwin Filters has redesigned some of our lube filter elements. The new design utilizes an end cap with a by-pass valve to allow oil to by-pass the media if the media becomes too restrictive to flow sufficient oil to the engine. The by-pass valve, in these redesigned elements, is not dependent upon the by-pass valve within the housing. The continued reuse of the by-pass valve in the housing may cause it to weaken or wear over time, allowing oil to by-pass the filter media prematurely.

The incorporation of the by-pass valve within the end cap of the element gives the customer the benefit of a new by-pass valve with the installation of each new Baldwin filter. Baldwin Filters has performed extensive testing on the new design of these filters to verify that we continue to provide our customers with filtration products that meet the excellent filtration performance expected from Baldwin Filters. Please look for this new design in your upcoming orders of the P7188, P7199, P7230, P7233, P7235, P7329 and P7405 filters.

New Design



Previous Design



By-Pass Valve Closed

By-Pass Valve Open

**If you have further questions,
 please contact our
 Service Engineering Team at (800) 822-5394.**